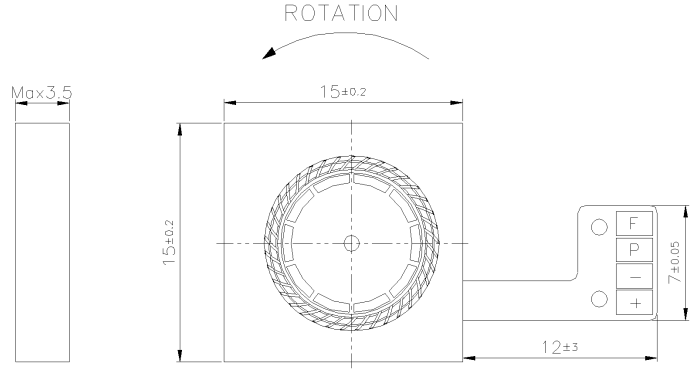
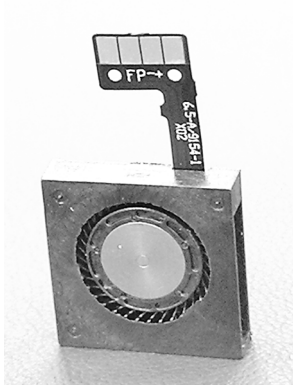
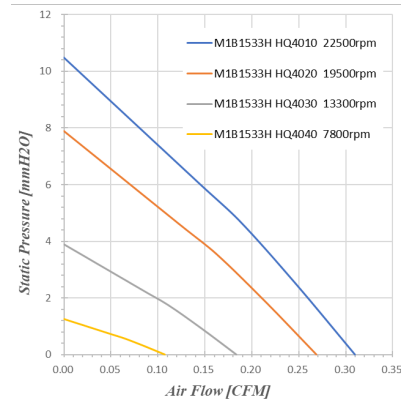


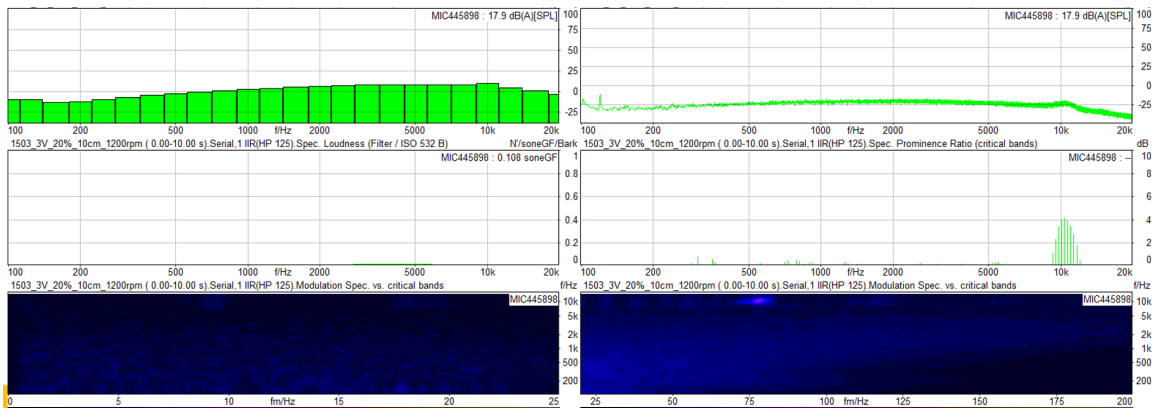
iMiNi Fan 15*15*3 MM Series



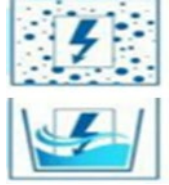
Housing : Plastic (UL 94V-0)
 Impeller : Plastic (UL 94V-0)
 Bearing Hydraulic Bearing
 Operating temp : -10 ~ 60°C
 Mass : 0.92g



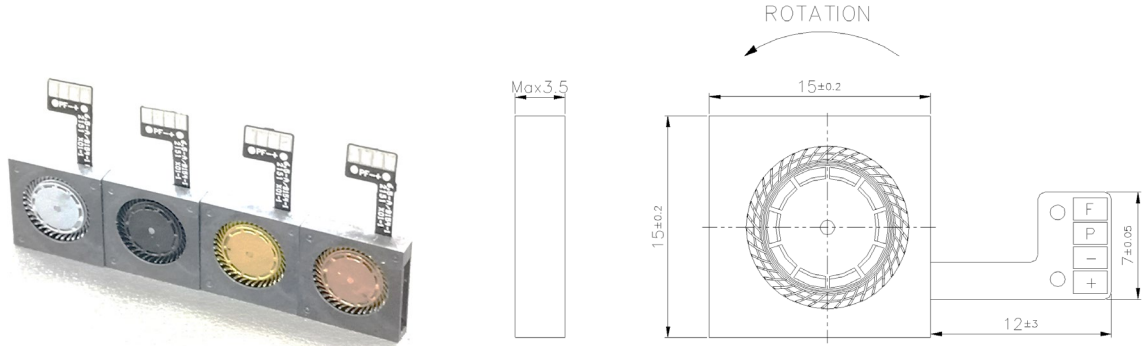
20% Duty Speed Sound Quality Spectrum



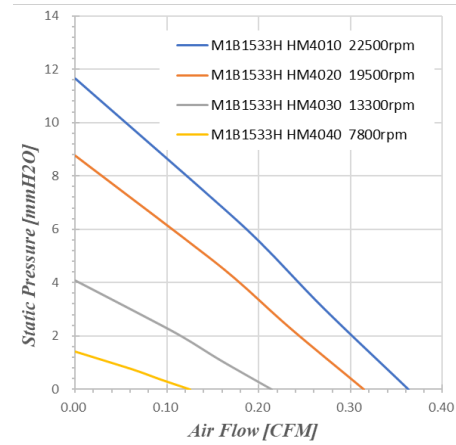
產品別	Model No.	Control Type	Bearing Type	Rated Voltage	Operating Voltage Range	Operating Temp.	Speed	Input Current	Input Power	Maximum Air Flow		Maximum Air Pressure		Noise	
				VDC	VDC	°C				R.P.M	Amp	Watt	CFM		l/min
Blower 1503 3V Series	M1B1533H	HQ4010	+/-FG/PWM	Hydraulic	3	2.5~3.5	-10~60	22500	0.25	0.75	0.31	8.78	102.9	10.49	37.6
	M1B1533H	HQ4020	+/-FG/PWM	Hydraulic	3	2.5~3.5	-10~60	19500	0.16	0.48	0.27	7.61	77.3	7.88	34.7
	M1B1533H	HQ4030	+/-FG/PWM	Hydraulic	3	2.5~3.5	-10~60	13300	0.094	0.28	0.18	5.19	38.2	3.90	26.8
	M1B1533H	HQ4040	+/-FG/PWM	Hydraulic	3	2.5~3.5	-10~60	7800	0.043	0.13	0.11	3.04	12.4	1.26	15.8



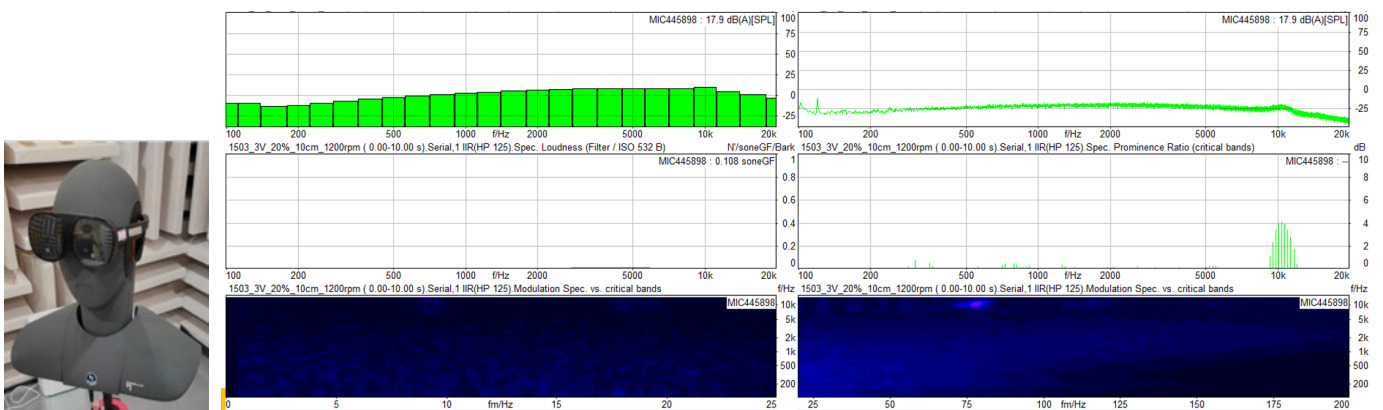
iMiNi Fan 15*15*3 MM Colorful Series



Housing : Plastic (UL 94V-0)
 Impeller : Metal
 Bearing Hydraulic Bearing
 Operating temp : -10 ~ 60°C
 Mass : 1.15g



20% Duty Speed Sound Quality Spectrum



產品別	Model No.		Control Type	Bearing Type	Rated Voltage	Operating Voltage Range	Operating Temp.	Speed	Input Current	Input Power	Maximum Air Flow		Maximum Air Pressure		Noise
					VDC	VDC	°C	R.P.M	Amp	Watt	CFM	l/min	Pa	mmH2O	
Blower 1503 3V Coloful Series	M1B1533H	HM4010	+I-/FG/PWM	Hydraulic	3	2.5~3.5	-10~60	22500	0.25	0.75	0.36	10.27	114.2	11.64	36.9
	M1B1533H	HM4020	+I-/FG/PWM	Hydraulic	3	2.5~3.5	-10~60	19500	0.16	0.48	0.31	8.90	85.8	8.74	33.9
	M1B1533H	HM4030	+I-/FG/PWM	Hydraulic	3	2.5~3.5	-10~60	13300	0.094	0.28	0.21	6.07	39.9	4.07	25.7
	M1B1533H	HM4040	+I-/FG/PWM	Hydraulic	3	2.5~3.5	-10~60	7800	0.043	0.13	0.13	3.56	13.7	1.40	15.0